

society
film
architecture



workshops
&
international
lectures

posters
&
movie
reviews

alt+a



www.sf-a.org

S F (a) 3
STORYLINE



SF(a) 3 STORYLINE



S F (a) 3 STORYLINE

by

Nely Andreea VÎNĂU

Tiberiu TEODOR-STANCIU

Răzvan Mircea NICA

2024

Electronic versions available at

SF(a) website: <https://sf-a.org>

ALT+A website:

<https://altplusa.org>

E-mail: asociatia@altplusa.org

- 4 **SF(a)** Society. Film. Architecture **SYNOPSIS**
- 10 **SF(a)** **LOGO DESIGN & BRANDING**
- 12 **SF(a)** season 3 **SCRIPT**
- 16 **SF(a)** season 3 **CAST & JURY**
- 28 Previously on **SF(a)** season 2
- 34 **SF(a)** season 2 **ALTERNATIVE POSTERS**
- 58 Previously on **SF(a)** season 1
- 62 **SF(a)** season 1 **ALTERNATIVE POSTERS**
- 72 **SF(a)** season 3 **PRODUCERS & Acknowledgements**

Architecture is deeply embedded in our society and culture, narrating the story of our progress, values, and aspirations. However, the deeper meaning behind a building's design can often be elusive. Although we may admire the aesthetic elements of architecture, each structure holds a deeper essence. To genuinely understand and appreciate architecture, we must look beyond its physical structures and explore the stories it tells. That's where cinematography comes into play ...

Genre: Architecture, Cinematography and Illustration workshop

Workshop outcomes: alternative posters and literary and film chronicle

Target group: Student or Graduate, Architect or Artist, Philologist or Philosopher, or simply passionate about film, architecture and illustration, you are welcome to the SF(a)3 workshop and lectures

SF(a) season 2 exposition at Iași Palace of Culture, part of Tomorrow MUST cultural event organized by OAR Iași. 2023



SF(a) SOCIETY. FILM. ARCHITECTURE SYNOPSIS

Runtime: 2022 onward

Season 1 (2022) Blade Runner & PostModernism

Season 2 (2023) Metropolis & Modernism

Season 3 (2024) A Clockwork Orange & Brutalism

Season 4 (2025) ... loading



SF(a) Project goals

SF(a) Society. Film. Architecture project consists of a workshop that encompasses both didactic elements, such as a series of lectures, as well as practical activities, like the design of an alternative movie poster. The activities aim to foster creativity, critical thinking, synthesis abilities, and cooperation skills. The secondary goal of the workshop is to promote a sense of belonging among students within a cohesive and interconnected educational framework.

The stated objectives encompass several key areas: fostering applied creativity among students, applying theoretical knowledge to real-world settings, critically analyzing a particular artistic work, namely a cinematographic achievement, acquiring practical skills through the design of a poster or alternative advertisement, developing graphic communication abilities through hands-on experience with contemporary graphic representation techniques, promoting competitiveness and adaptability, nurturing critical thinking skills, cultivating analytical abilities, and cultivating the development of

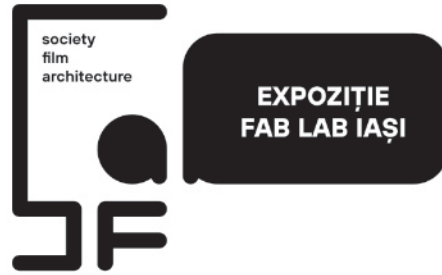
synthesis skills.

SF(a) project involves the communication of knowledge in a variety of academic fields, including the artistic areas of photo-video art, cinematographic art, and contemporary philosophy, as well as urban sociology, history, and the theory of architecture. Group talks involved students engaging in collaborative conversations under the guidance of tutors.

Target group and partners

On a voluntary basis, students enrolled in architecture, visual arts, and literature education as well as other fields constitute the target group. At the first edition (2022) there was a total enrollment of 25 students and in the subsequent iteration (2023) the number of participating students increased to 65. The lectures were accessible to both workshop participants and the public.

To facilitate these events, we collaborated with the A.S.A.I. student association and the Romanian Order of Architects, namely the Iași branch. The workshop was held over a period of six days, taking place between the end of June and the start of July.



Visual communication

How can one effectively convey a message without imposing specific instructions and without beforehand influencing the outcome of the message? Several inquiries occur when faced with the task of creating an alternative poster. The posters include an inherent didactic function, as they convey a message and express a quest that combines personal observations and an adaptive process to one's own world. Consequently, they offer fresh perspectives for others to understand.

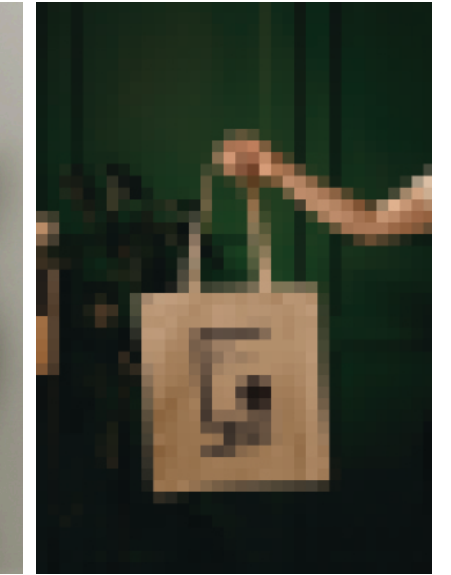
Why posters?

The poster is characterized by a whimsical arrangement of space in two dimensions. It explores the concept of freedom, particularly freedom of expression, and emphasizes the defiance required to engage with many components such as iconography, materiality, scale, hierarchy, temporality, expression, color, rhythm, tone, abstraction, and materialization. The process of creating a poster involves a systematic synthesis, wherein the objective is to effectively convey a message via the graphical representation of concepts and language. This requires achieving a harmonious balance between the conceptual framework, visual elements, and textual content. The use of chromatic elements might be understood as a deliberate response to a

metaphorical inquiry into the color palette of a monochromatic film. Therefore, the depicted items undergo a reduction in color saturation, serving as a visual focal point in Fritz Lang's film (on season 2). In contrast, the background draws inspiration from the vibrant, colorful spectrum of the various activities, such as workshops, exhibitions, or round table discussions.

Why dystopia?

What is the reason for the use of dystopia as an alternative education method? What could be the reason for not doing so? Architecture is not an isolated entity but rather a manifestation of societal influences. Similar to other visual arts encompassed under the realm of visual culture, architecture embodies the aspirations, values, and concerns of society. Nobody will ever design or build architecture simply for the purpose of communicating a message; similarly, nobody will ever propose the implementation of a dystopian society. However, it is essential to direct our attention towards the presence of dystopia in contemporary society, particularly within the current socio-cultural landscape. The concept of dystopia has evolved beyond its original purpose as a tool for deconstructing potential futures.



SF(a) logo design & branding by Tiberiu Teodor-Stanciu, 2024

SF(a) LOGO DESIGN & BRANDING

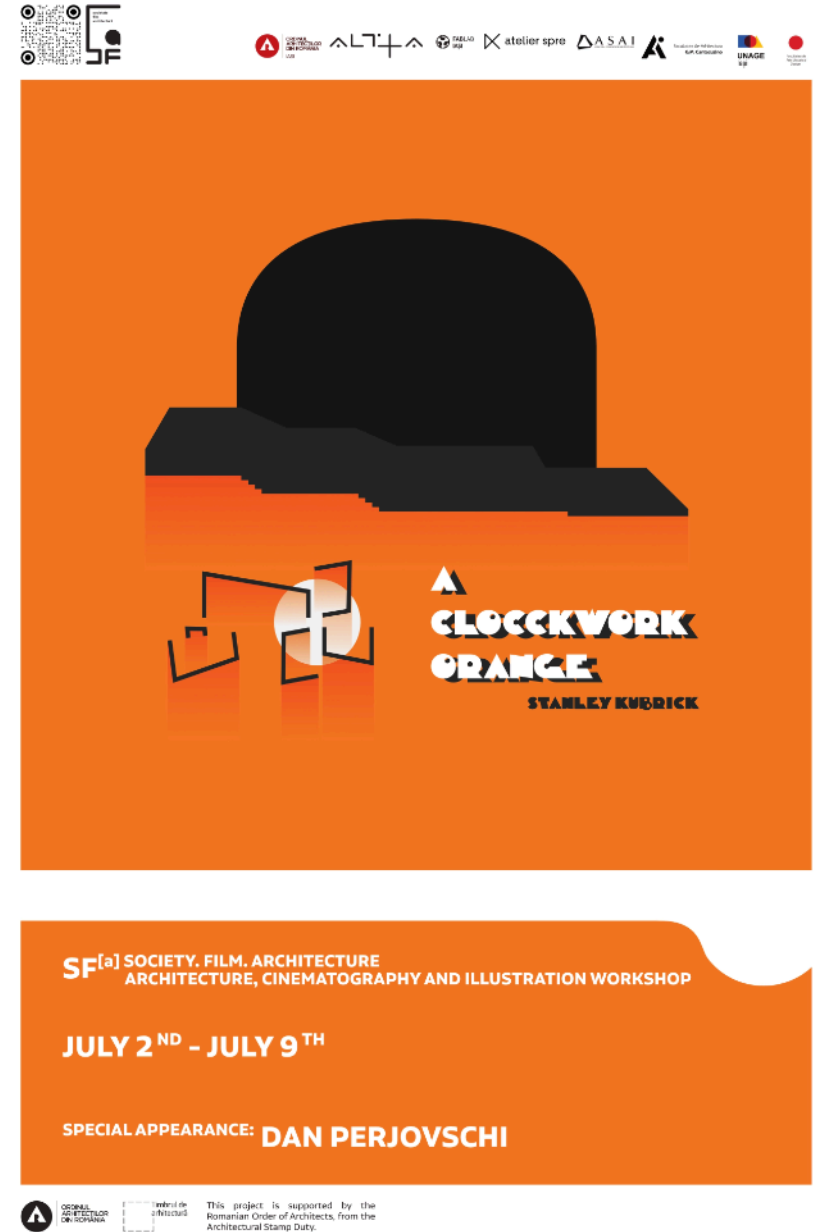
The SF(a) logo encompasses several referents such as invitation to debate, dialogue box, motion picture, 3D glasses, architecture, and Science Fiction. These elements are presented in a manner that adheres to the proportions often found in movie posters. Therefore, it can be argued that the logo functions as a self-contained billboard and serves as an optimal catalyst for initiating discourse.

The utilization of monochrome and consistent line thickness in the logo establishes the foundation for fostering a well-balanced discourse within a neutral environment that refrains from exerting influence, coercion, or causing discomfort.

12

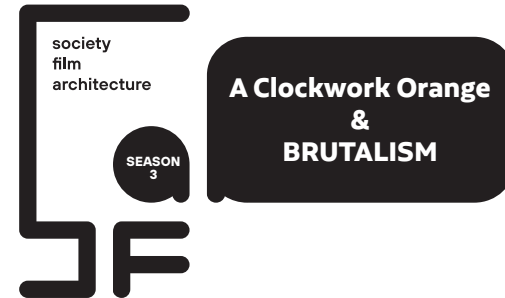
SF(a) season 3 SCRIPT

SF(a) season 3 official poster



14

SF(a) Season 3 SCRIPT



JULY 2ND - JULY 6TH

F A B L A B . I A S I

M U Z E U L . P O G O R

- SCENE 1 Movie presentation: A Clockwork Orange (Stanley Kubrick, 1971)
- SCENE 2 Literary and film chronicle Laboratory
- SCENE 3 Alternative poster Laboratory
- SCENES 4 & 5 Lectures
- SCENE 5.1 Dan Perjovschi & Tiberiu Teodor-Stanciu - Revolution tram/ guided tour
- SCENE 5.2 Evening Laboratory

SCENE 6

JULY 9TH

F A B L A B . R A M A D A

Premiere - Exhibition launch

Roundtable - producers, jury & partners

SF(a) season 3 CAST & JURY

Dan **PERJOVSCHI**

Dan Perjovschi lives in Bucharest and Sibiu. He critically draws with humor directly on the walls of art institutions around the world commenting politically, socially and culturally on the daily life of global society. His drawings in black and white are visual editorials.

He has had solo exhibitions at Tate Modern London, MoMA New York, Macro Roma, Moderna Museet Stockholm, Reykyavik Art Museum, Vannabbe Eindhoven, Ludwig Cologne, Kunsthalle Hamburg, Nasher Museum Duke University or Kiasma Helsinki and group exhibitions at Center Pompidou Paris, Tate Liverpool, Castello di Rivoli Turin, MoMA San Francisco, MUAC Mexico, MAM Warsaw, MCBA Lausanne or MOT Tokyo.

He participated in Documenta 15 and the Istanbul, Venice, Sao Paulo, Moscow, Sydney,



Lyon, Dublin, Iași, Timisoara and Jakarta art biennials.

He received the George Maciunas prize in 2004, the ECF Princess Margriet prize, Amsterdam 2012 (with Lia Perjovschi) and in 2016 the Rosa Schapire Kunsthalle Hamburg prize. Perjovschi is the laureate of the Gheorghe Ursu Human Rights Foundation 1999 and the CERE Participation Civil Society Gala 2016.

From 1990 to today he published drawings in Revista 22, Bucharest.

Since 2010, Ziarul Orizontal has been doing the art project in the public space in Sibiu.

Since 2009 a drawn installation is permanently located in NTK National Technical Library Prague.

Dana VAIS



Dana Vais, PhD, is a professor at the Faculty of Architecture and Urban Planning of the Technical University of Cluj-Napoca, where he teaches the *History of Modern and Contemporary Architecture* and *Dwelling* courses. She received both the architect diploma (1989) and the PhD (2000) from the “Ion Mincu” Institute of Architecture of Bucharest. She is a member DoCoMoMo as well as Housing group within EAHN (European Architectural History Network). Recently, he was a visiting researcher at Politecnico di Milano (2022). Her areas of interest are post-war modernism, the architectural discourse of the socialist period in Romania, socialist housing and the futuristic imaginary of the 1960s.

Matei BEJENARU



Matei Bejenaru is an artist and founder of Periferic Biennial in Iasi, Romania. Established in 1997 as a performance festival, Periferic transformed into an international artist-run contemporary art biennial defined as a platform for discussions on the historical, socio-political, and cultural contexts of the city. With a group of artists and philosophers from Iasi, Bejenaru founded the Vector Association in 2001, a contemporary art institution that supported the local emerging art scene to become locally and internationally visible. Together with a group of artists and professors he founded in 2015 the Center of Contemporary Photography in Iasi. He is teaching photography and video at "George Enescu" Arts University in Iași.

Viola **RUHSE**

Viola RÜHSE works as the head of the Center for Image Science and course director at the University for Continuing Education Krems in Austria. She studied History of Art and German Language and Literature at the universities of Hamburg and Vienna. She received her PhD with a dissertation on Siegfried Kracauer's film writings (Viola Rühse, *Film und Kino als Spiegel. Siegfried Kracauers Filmschriften aus Deutschland und Frankreich*, Berlin/Boston: De Gruyter 2022). Her current main themes of research in addition to film theory are photography, modern and contemporary art, and critical theory. She also works as an artist/photographer. One of her critical essays was granted the Bazon Brock Essay Award.

Emanuela **ILIE**

Emanuela Ilie is a literary critic and associate professor at the Faculty of Letters, "Alexandru Ioan Cuza" University of Iași. She has published eight books and numerous studies, articles and literary chronicles in cultural and academic journals. We mention the volumes "Hieroglyphs of the poets" (2008– Debut Award of the magazine "Convorbiri Literare"), "The Critical Dictionary of Iași Contemporary Poetry" (2011– The Prize for Literary Criticism of USSR Iași), "Fantastic and Otherness" (2013) and "Bodies, Exiles, Therapies" (2020– The Prize for Literary Criticism of USSR Iași and Award for interdisciplinary critical studies of "Ateneu" magazine). She is a member of the Romanian Writers' Union and A.L.G.C.R.

Anca **HORVATH**

Anca Horvath is an assistant professor with the Research Laboratory for Art and Technology at Aalborg University in Denmark. In her research, she investigates the relationships between emerging technologies, including computational design, digital fabrication, AI and bio-technologies, and creative practice, and their place in broader cultural contexts. She uses design-based research as a main methodology for inquiry and her projects have covered a broad range of scopes and scales - from jewelry to shoes, all the way to urban design. Prior to joining Aalborg University Anca has worked as an architect and computational designer in Romania and Denmark.

Silviu **TEODOR - STANCIU**

Silviu Teodor-Stanciu - designer and Senior Lecturer at the Faculty of Visual Arts and Design (UNAGE Iași), is active in the Iași cultural environment through artistic and design projects. "Iași - the city of painted trams", "TramArt", "Papatram and the company" are some of the most important projects carried out under the auspices of the Tramclub Iași association, whose activity has been coordinated since 2013. In collaboration with the Iași Public Transport Company laid the foundation for the establishment of the Iași Public Transport Museum, where rare vehicles are preserved, real landmarks of Romanian industry and design.

Radu **CUCUTEANU**



Radu Cucuteanu is a historian, translator and book editor, currently employed by the Junimea Publishing House in Iași. He has published numerous scientific articles, interviews, chronicles and book reviews in cultural and academic journals, some of which he has edited over time. He is in charge of the magazine "Suplimentul de cultură", he is a member of the editorial board of the magazine "Romanian Journal of Modern History" and of the magazine "Scriptor". He likes to laugh even when there is no laughing matter.

The cast of SF(a) Society. Film. Architecture season 3 is joined by the tutors of the two laboratories:



ALTERNATIVE POSTERS LABORATORY

Nely **VÎNĂU** & Tiberiu **TEODOR - STANCIU**



LITERARY AND FILM CHRONICLE LABORATORY

Emanuela **ILIE**, Ana Cristina **TUDORA** & Gabriel **TUDORA**



SF(a) Season 3 JURY

SECTION 1 – Alternative Posters

Alin Enver **HOBLEA**, architect, president of OAR Iași Branch;

Adrian **MIRONESCU**, designer;

Silviu **TEODOR-STANCIU**, PhD, Senior Lecturer, Faculty of Visual Arts and Design, "George Enescu" University of Arts of Iași

Ramona **COSTEA**, PhD, Assistant Lecturer "G.M. Cantacuzino" Faculty of Architecture, "Gheorghe Asachi" Technical University of Iași

SECTION 2 – Literary and Film Chronicle

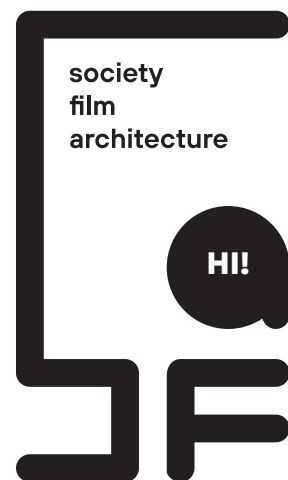
Emanuela **ILIE**, Ph.D Associate Professor Faculty of Letters, "Al. I. Cuza" University of Iași

Ana Cristina **TUDORA**, PhD Senior Lecturer, "G.M. Cantacuzino" Faculty of Architecture, "Gheorghe Asachi" Technical University of Iași

Gabriel **TUDORA**, PhD Senior Lecturer, "G.M. Cantacuzino" Faculty of Architecture, "Gheorghe Asachi" Technical University of Iași

SF(a) 3 - 2024 registered **PARTICIPANTS**

26

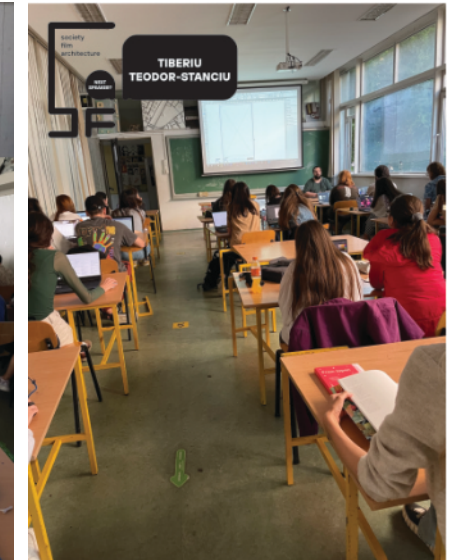


Acșinte Andra Elena
Alexoaie Flavia-Marina
Amarandei Maia
Amarandei Matei
Anastasei Sofia
Apostu Alin
Apucăloaiei Mihaela
Arhip Oana
Avasilcai Maria
Babă Teodor-Radu
Baciu Anamaria
Baran Virginia
Berenghia Smaranda
Blîndă Ioana-Alexandra
Boianțiu Andra
Botezatu Stefania
Burcă Delia Elena
Burlacu Alexandra
Burlacu Elena
Butnarusu Maria
Butnariu Georgiana
Chindea Oana-Maria
Chiratcu Tudor
Ciotir Lucian-Nicolae
Cobelița Lavinia
Cocea Alexandru
Codău Alexandra-Nicoleta
Cojocaru Delia-Maria
Coresciuc Anastasia
Coroi Magdalena
Cosareanu Ecaterina
Costantin Maria
Costin Smărăndita-Elena
Costoaea Smarandita Anghelina
Crasnean Andreea

Deaconescu Ana-Maria
Dobrovolschi Ioana-Maria
Dumitrache Ana-Stefania
Dumitraș Sabina-Oxana
Dumitru Cristian-Iustin
Dușu Gabriela
Enea Nicu-Alexandru
Ferghețe Tudor
Filote Maria Patricia
Gheorghiu Andrei-Florin
Gorgan Luigi-Manuel
Graciov Delia-Alexia
Grigoriu Stefan
Hrițuc Cosmin
Ichim Octavian
Ichim Tudor
Iordache Ana-Maria
Lăcătușu Alina-Mădălina
Macovei Ilinca
Malinovschi Diana
Manolache Cristiana
Martin Stefania
Mărtinșu Diana- Isabela
Mereuță Xenia
Mîrș Andreea Silvia
Mocanu Roxana
Moisa Ioana Daniela
Munteanu David-Edward
Muntenasu Maria
Muntianu Cătălin-Daniel
Naito Vanessa
Năstasă Miruna-Georgiana
Nechita Maria
Nichifor Teodora-Elena
Nișcă Ana-Maria

Nonea Ana-Maria
Oboroceanu Florina
Obreja Tania-Miruna
Onofrei Daria Paraschiva
Pelin-Litke Marta-Carmen
Popoia Cristian
Popovici Valentin Andrei
Prisecariu Roxana Maria
Pruteanu Alexandra
Puiu Alexandru-Gabriel
Roșu Matei-Serban
Rotaru Roberta
Rusu Horia
Sandu George-Teofan
Schipor Florin
Scutareanu Andreea-Cristina
Selaru Katarina Maria
Șenchea Ioana Alexandra
Sfirnaciuc Gianluca-Nicola
Soreanu Anda
Șorodoc Valentina
Stanciu Emma Paula
Stegaru Crina-Valentina
Stoica Tudor
Surdu Claudia Petronela
Tănase Denis
Teona-Delia Cancel
Todor Laly
Todorescu Teodor Damian
Țuglea Teofil
Turtoi Laura
Văsîi Paul-Costin
Verdeș Alina
Zaharia Ecaterina
Zeliznî Olga

... and still counting



SF(a) season 2 scenes. 2023

Previously on SF(a) Season 2

The SF(a) workshop embraces the concept of "together" in all its facets, therefore acknowledging the importance of collective unity. In the realm of cinema, individuals from many disciplines, including students, tutors, architects, designers, artists, engineers, and photographers, engage in a collective exploration, analysis, and exchange of ideas. Within this shared space, they engage in activities such as viewing, discovering, discussing, arguing, learning, working, debating, and evaluating, as well as augmenting and enhancing their understanding of a subjective and intimate reality.

SF(a) season 2 **CAST**



Emanuela Faculty of Letters, "Al. I. Cuza"
ILIE University of Iasi

Matei Faculty of Visual Arts and
BEJENARU Design, "George Enescu" Arts
University, Iasi

Viola **RUHSE** University for Continuing
Education Krems, Austria

Anca **HORVATH** Research Laboratory for Art
and Technology at Aalborg
University, Denmark

Vlad **ENCULESCU** designer

Nely **VÎNĂU** architect

Tiberiu **TEODOR-STANCIU** architect

Răzvan **NICA** architect

SF(a) season 1 **JURY**



Vlad **ENCULESCU** designer

Adrian **MIRONESCU** designer

Oana **STANCIU** architect

Federico **BABINA**



Special appearance

My name is Federico Babina.

I am an Italian (since 1969) architect and graphic designer (since 1994) that live and work in Barcelona (since 2007), but mostly I'm a curious person (since ever). Every day I try to rediscover a way to observe the world as through the eyes of a child. Children are able to have a vision of things totally uninhibited and without the conditioning of the experience. The children's drawings are always amazing and beautiful in

their spontaneous simplicity and clarity. I like trying to explain the world I see through different techniques of expression. I like the richness of the language and the diversity of its forms. I do not want to confine me in a prison of a style or shape. Drawing and illustration are for me one of the ways to recount and photograph the thoughts, feelings and emotions. Every picture has a story and every picture is a witness of a story.



SF(a) season 2 scenes. 2023

SF(a) Season 2 PARTICIPANTS

Alexa Teodora-Laura	Dumitrache Ana-Ștefania	Onofrei Daria Paraschiva
Alexoaie Flavia Marina	Dumitraș Iulia Bianca	Paraschiv Ioana
Antici Ana-Maria	Dumitraș Sabina Oxana	Pătrașcu Ilinca
Apetrii Maria	Dumitru Cristian-Iustin	Platon Emanuel
Apucăloaiei Mihaela	Enea Nicu-Alexandru	Popescu Ana
Aroșulesei Lavinia	Ferghețe Tudor	Popoiu Mara
Aștefănesei Daniel Marian	Ghileschi Bogdan Alexandru	Pricop Maria-Anastasia
Baciu Anamaria	Gorgan Luigi-Manuel	Rotaru Georgiana Roberta
Berescu Andra Maria	Grosu Andrei Liviu	Rusu Andrei Tudor
Boianțiu Andra Mihaela	Grosu Teodor Marian	Rusu Horia
Burcă Delia-Elena	Hofnar Ana-Teodora	Schipor Florin
Burlacu Elena	Hrituc Cosmin-Gabriel	Senchea Alexandra Ioana
Butnărică Gabriela Camelia	Ichim Tudor	Sfîrnaciuc Gianluca-Nicola
Butnaru Andra-Elena	Iordăchel Ana-Maria	Șoitu Karina-Alexandra
Cavalgiu Andreea	Larion Raluca	Sopincean Ștefan-Ilie
Chindea Oana Maria	Lupan Dana	Spânu Georgiana
Ciotir Lucian-Nicolae	Manolache Cristiana Florentina	Stoica Tudor
Cobelița Lavinia	Marcu Andreea	Tănase Denis Marian
Codău Alexandra Nicoleta	Mateieș Gabriela	Todorescu Teodor Damian Iulian
Coresciuc Anastasia	Mereuță Xenia	Țuca Ionuț-Nicolae
Coroi Magdalena	Miron Andreea Bianca	Urdea Raluca Elena
Coșăreanu Ecaterina	Mocanu Roxana-Mihaela	Vasilache Elena
Cozmancă Smaranda	Muntianu Cătălin-Daniel	Zaharia Ecaterina
Dargaud Amandine	Năstasă Miruna-Georgiana	Zahariuc Andrei Dumitru
Deaconescu Ana-Maria	Nechita Maria	
Dobrea Alexandru-Adrian	Nonea Ana-Maria	

SF(a) Season 2 ALTERNATIVE POSTERS

The SF(a) posters are characterized by their animation, which stems from the perpetual absence of a definitive resolution. They resemble a signaling system that is not driven by the destination it intends to convey but rather by a starting point that leads to an unpredictable outcome. The individuals who participate in the activities and are involved in the creative processes associated with society, cinema, and architecture are the subjects of interest. The poster symbolizes a distinct moment in time, a moment that holds both anticipation, encounter, and recollection.

SF(a) season 2 official posters. 2023



SF(a) season 2
1st prize. 2023

36

SF(a) Season 2 ALTERNATIVE POSTERS



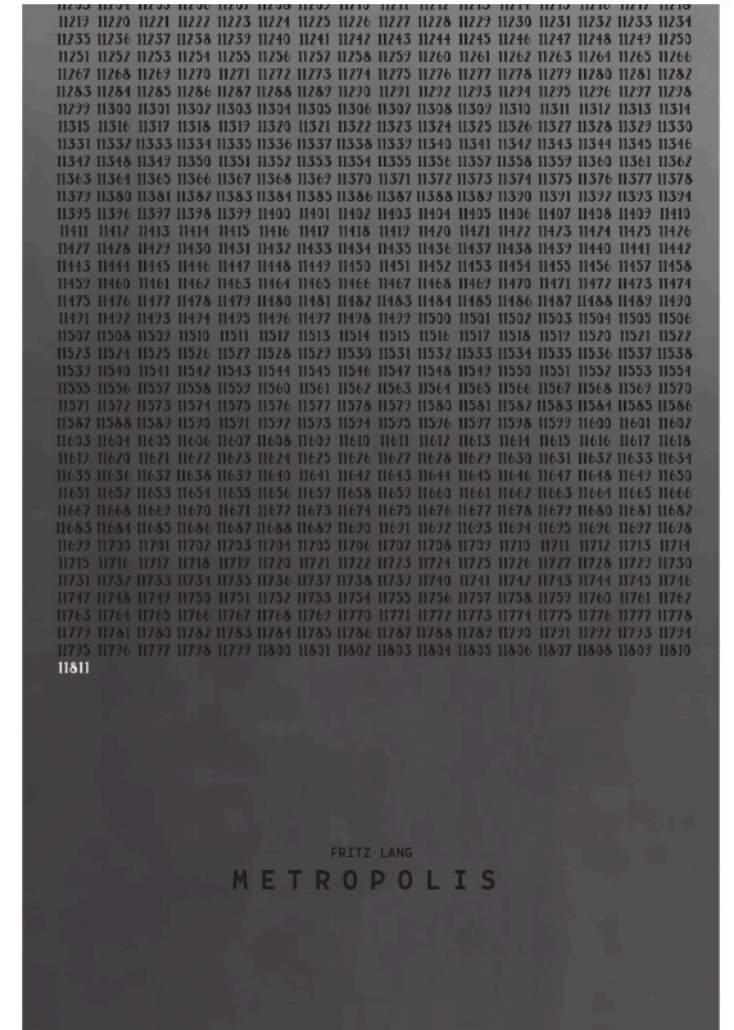
Sabina-Oxana Dumitraș



Facultatea de Arhitectură „G.M. Cantacuzino” din Iași
Universitatea Tehnică „Gheorghe Asachi” din Iași

2023

SF(a) season 2
2nd prize. 2023



Smaranda Cozmîncă



Facultatea de Arhitectură „G.M. Cantacuzino” din Iași
Universitatea Tehnică „Gheorghe Asachi” din Iași

2023

SF(a) season 2
3rd prize. 2023

38

SF(a) Season 2 ALTERNATIVE
POSTERS



Cavalgiu Andreea



Facultatea de Arhitectură „G.M. Cantacuzino” din Iași
Universitatea Tehnică „Gheorghe Asachi” din Iași

2023

SF(a) season 2
4th prize. 2023



Tudor Ichim



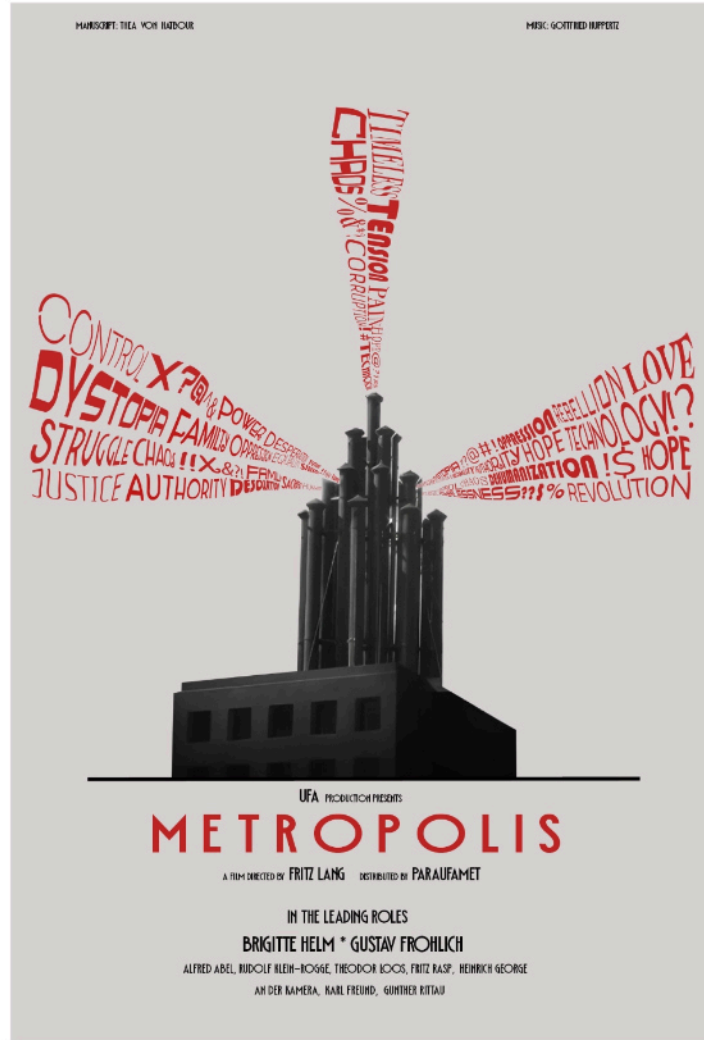
Facultatea de Arhitectură „G.M. Cantacuzino” din Iași
Universitatea Tehnică „Gheorghe Asachi” din Iași

2023

SF(a) season 2
Special jury prize.
2023

40

SF(a) Season 2 ALTERNATIVE
POSTERS



Larion Raluca



Facultatea de Arhitectură „G.M. Cantacuzino” din Iași
Universitatea Tehnică „Gheorghe Asachi” din Iași

2023

SF(a) season 2
Special jury prize.
2023

FRITZ LANG



Miruna Năstasă



Facultatea de Arhitectură „G.M. Cantacuzino” din Iași
Universitatea Tehnică „Gheorghe Asachi” din Iași

2023

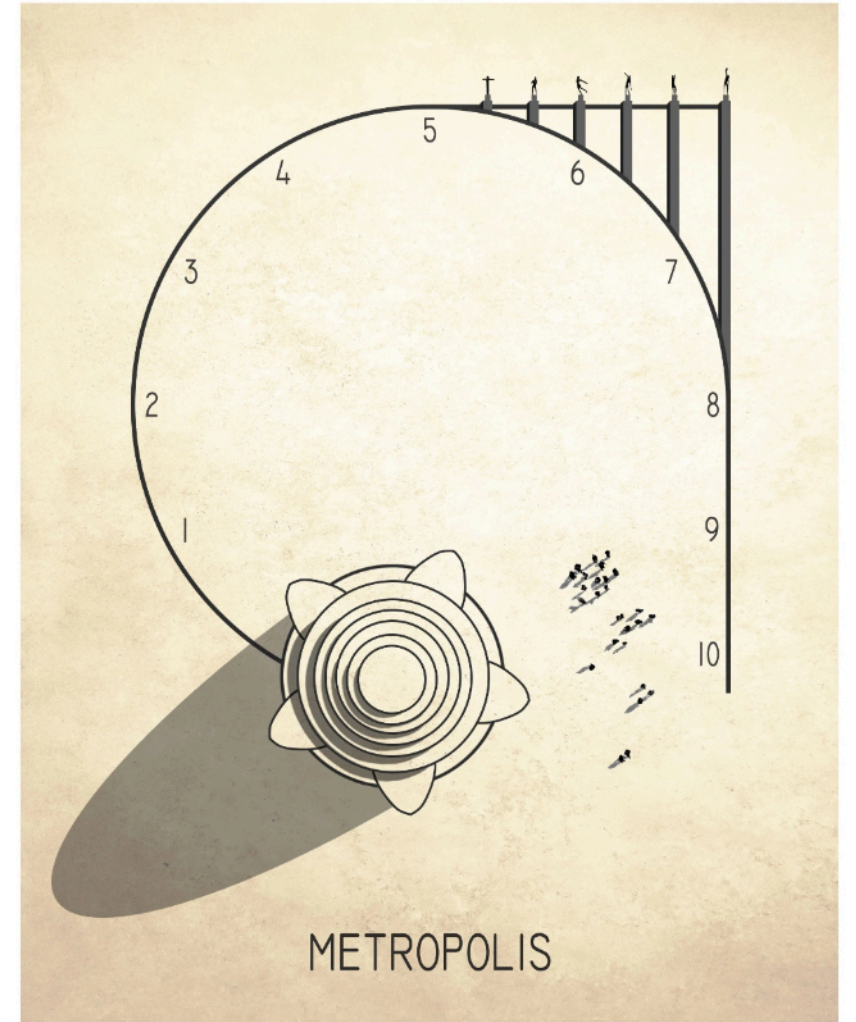


Iulia Bianca Dumitraș



Facultatea de Arhitectură „G.M. Cantacuzino” din Iași
Universitatea Tehnică „Gheorghe Asachi” din Iași

2023

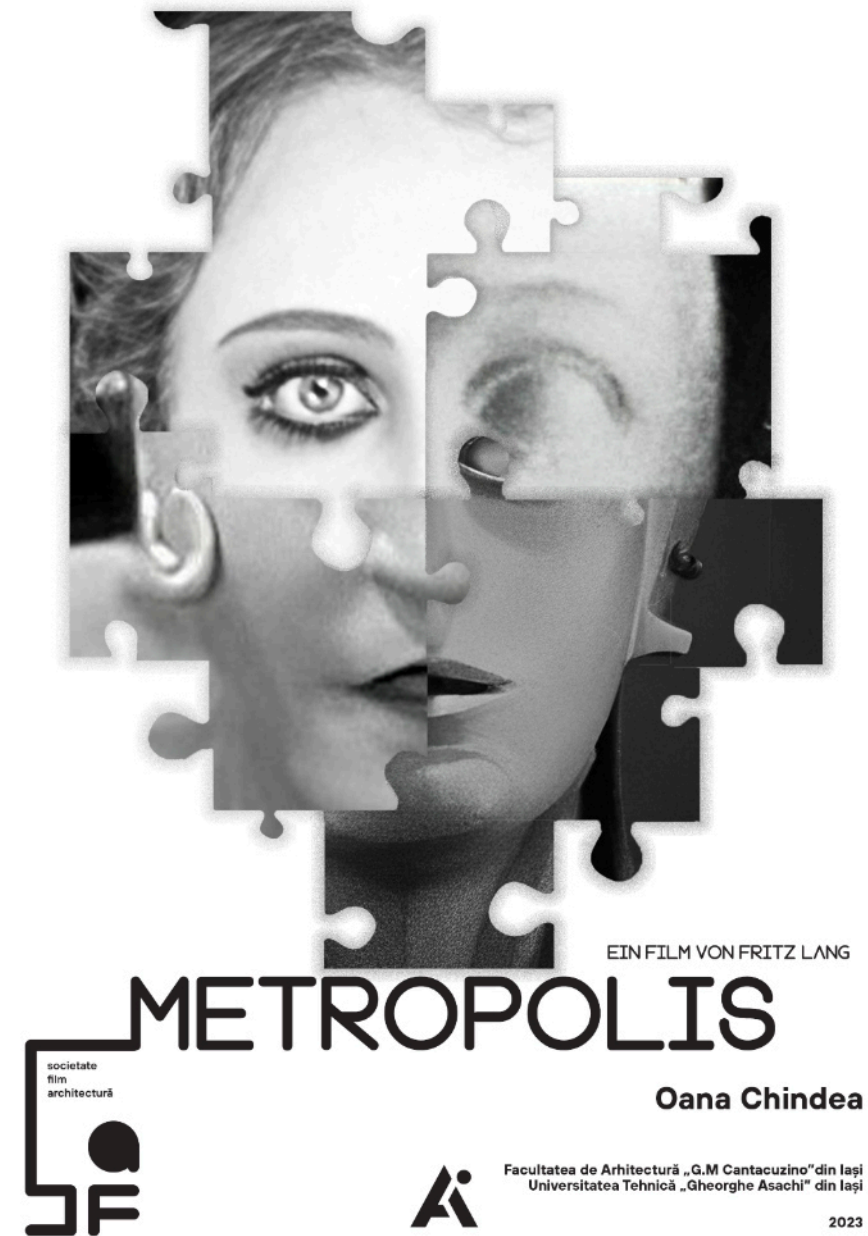


Daria Onofrei



Facultatea de Arhitectură „G.M. Cantacuzino” din Iași
Universitatea Tehnică „Gheorghe Asachi” din Iași

2023





CIOTIR LUCIAN-NICOLAE



Facultatea de Arhitectură „G.M Cantacuzino” din Iași
Universitatea Tehnică „Gheorghe Asachi” din Iași

2023

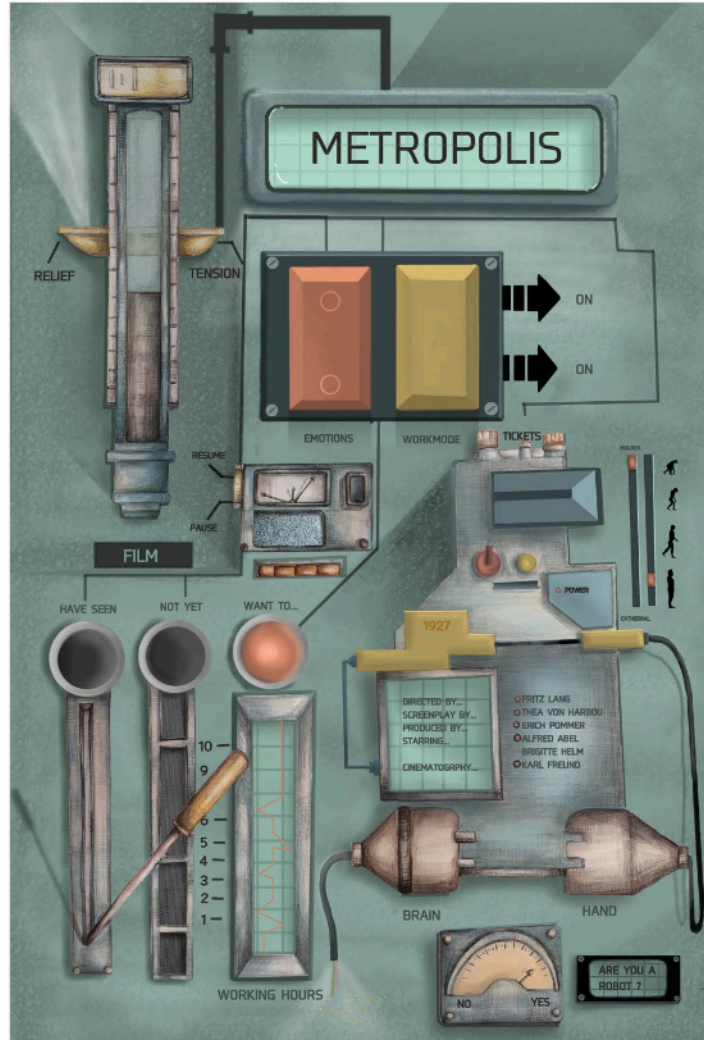


Lavinia Cobelița



Facultatea de Arhitectură „G.M Cantacuzino” din Iași
Universitatea Tehnică „Gheorghe Asachi” din Iași

2023



Coroi Magdalena, Nechita Maria



Facultatea de Arhitectură „G.M. Cantacuzino” din Iași
Universitatea Tehnică „Gheorghe Asachi” din Iași

2023



Coșăreanu Ecaterina



Facultatea de Arhitectură „G.M. Cantacuzino” din Iași
Universitatea Tehnică „Gheorghe Asachi” din Iași

2023



METROPOLIS

IS YOU. HERE. TODAY.



Dana Lupan



Facultatea de Arhitectură „G.M. Cantacuzino” din Iași
Universitatea Tehnică „Gheorghe Asachi” din Iași

2023



A FILM BY FRITZ LANG

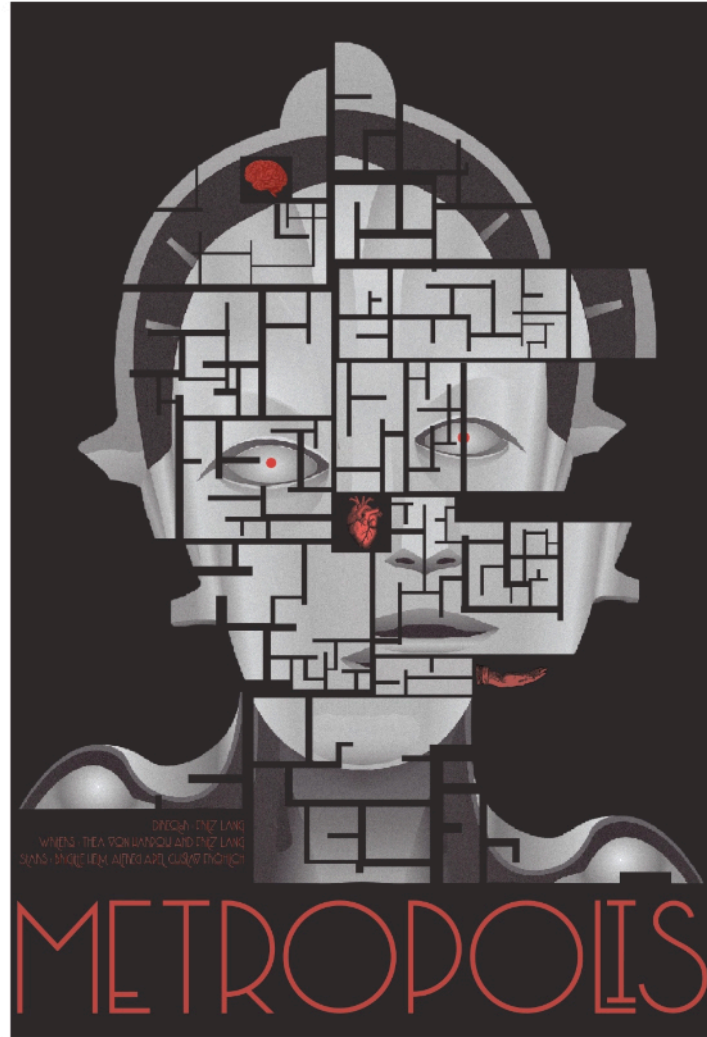


Ana Popescu



Facultatea de Arhitectură „G.M. Cantacuzino” din Iași
Universitatea Tehnică „Gheorghe Asachi” din Iași

2023



Alexoaie Flavia-Marina



Facultatea de Arhitectură „G.M. Cantacuzino” din Iași
Universitatea Tehnică „Gheorghe Asachi” din Iași

2023

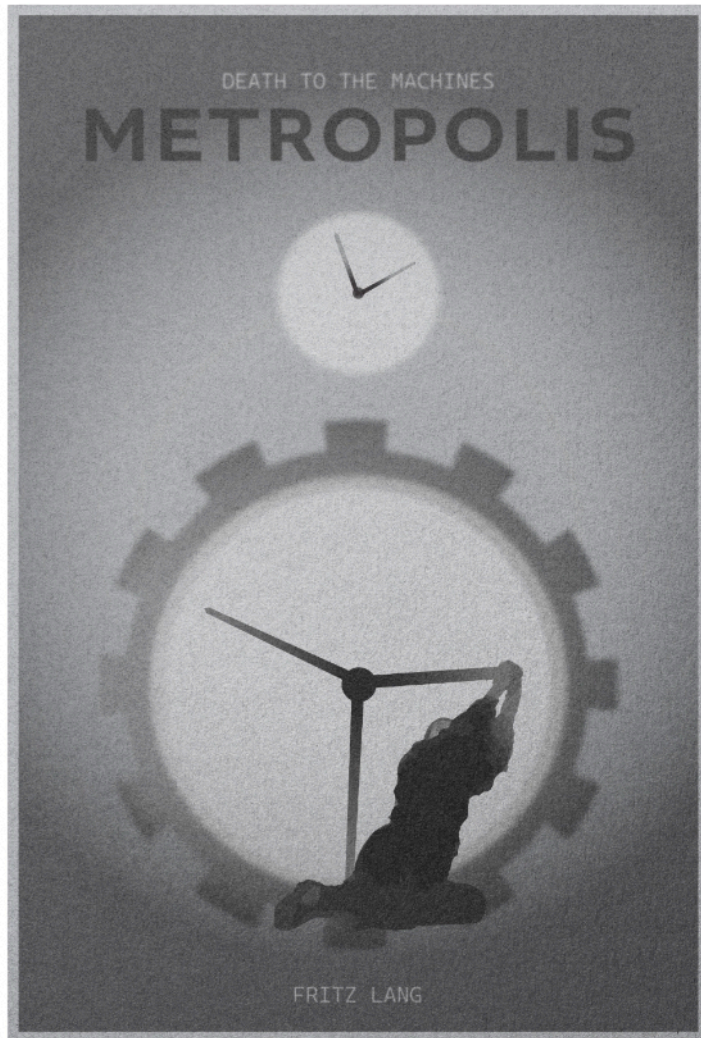


Dumitru Cristian-Iustin



Facultatea de Arhitectură „G.M. Cantacuzino” din Iași
Universitatea Tehnică „Gheorghe Asachi” din Iași

2023

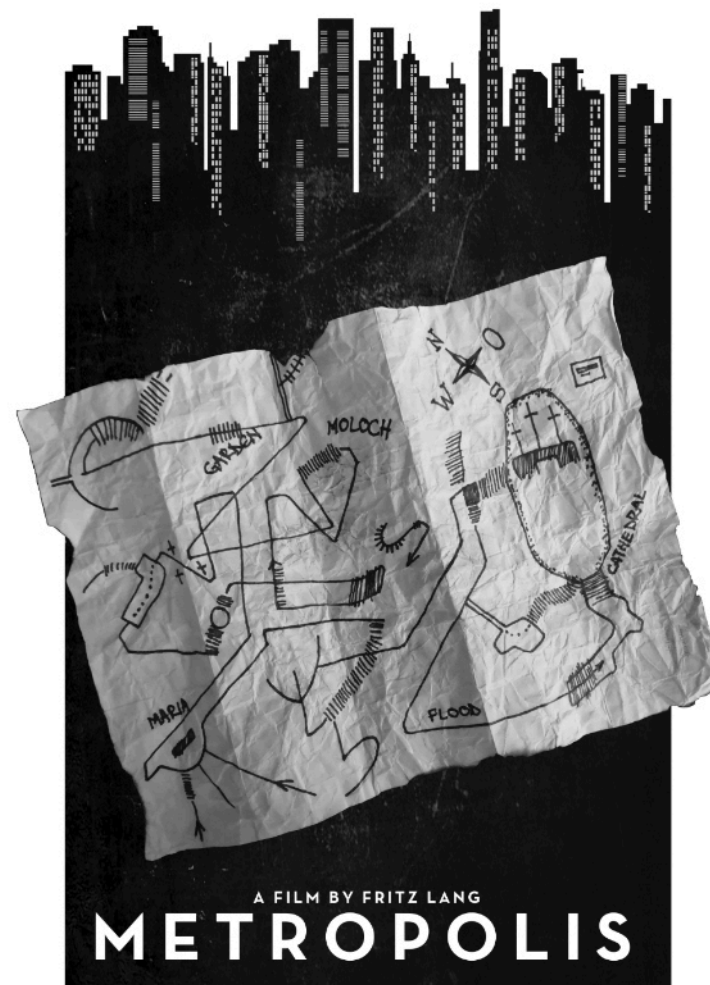


ZAHARIA ECATERINA



Facultatea de Arhitectură „G.M. Cantacuzino” din Iași
Universitatea Tehnică „Gheorghe Asachi” din Iași

2023



Alexandru-Adrian Dobrea

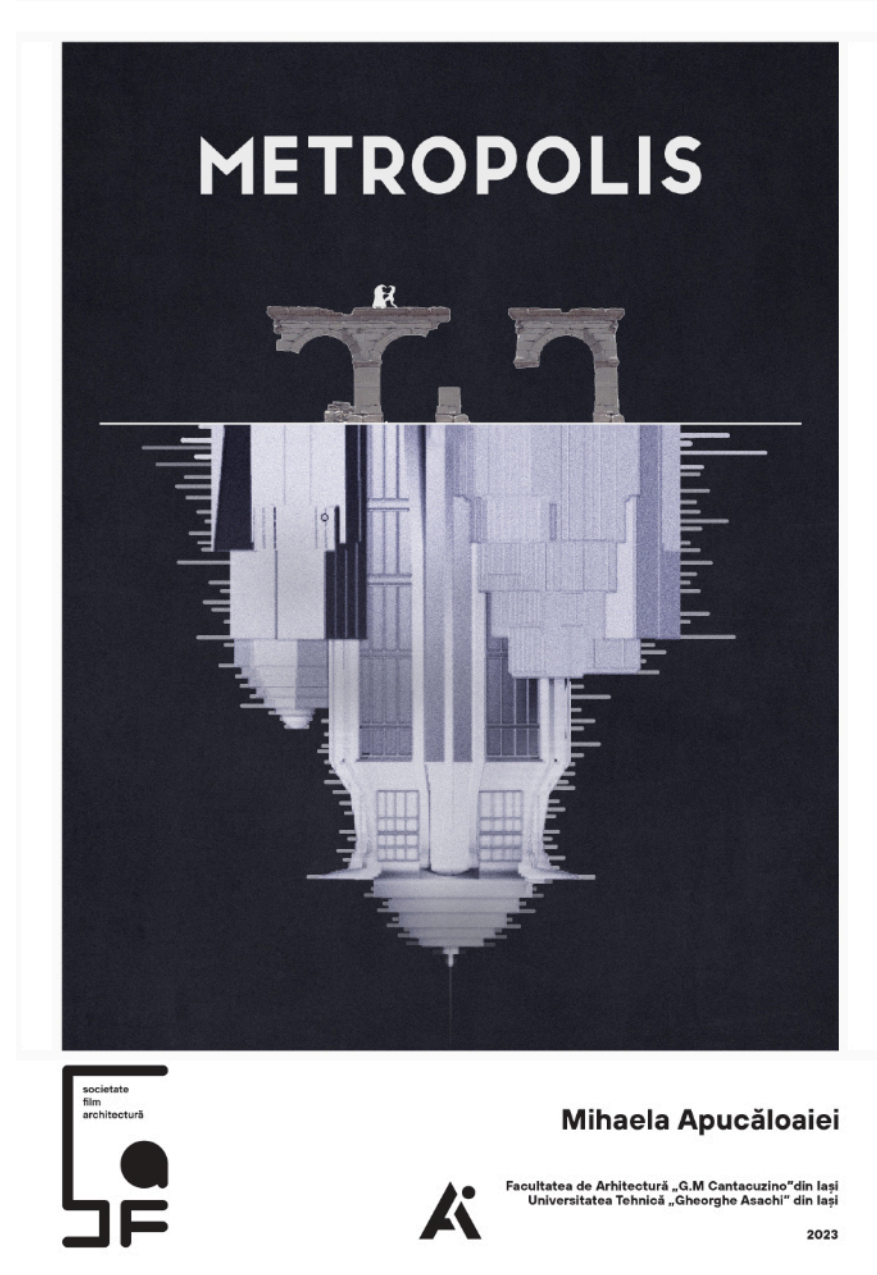


Facultatea de Arhitectură „G.M. Cantacuzino” din Iași
Universitatea Tehnică „Gheorghe Asachi” din Iași

2023



SF(a) season 2
Best review prize.
2023



The first edition of the SF(a) workshop focused on a critical analysis of Ridley Scott's movie Blade Runner (1982), drawing inspiration from the philosophical works of Frederic Jameson, particularly his exploration of postmodernism, or the "Cultural Logic of Late Capitalism".

Previously on SF(a) Season 1





SF(a) season 1 scenes. 2022

SF(a) season 1 PARTICIPANTS

SF(a) season 1 Final scene.
2022



Previously
on
SF(a) Season 1

60

SF(a) season 1 CAST



Emanuela **ILIE** Faculty of Letters
“Al. Ioan Cuza” University of
Iași. Romania

Pedro P. **PALAZZO** School of Architecture and
& Sarah **ALMEIDA** Urban Planning. University of
Brasilia

Radu **CUCUTEANU** historian, translator and book
editor

Ionuț **TUDOR** philosopher

Raluca **MANOLIU** architect

Nely **VÎNĂU** architect

Tiberiu **TEODOR-** architect

Răzvan **NICA** architect

Boiangiu Andra Mihaela
Branzilă Ana
Buleu Maria Andreea
Burlacu Elena
Cancel Teona Delia
Ciotir Lucian Nicolae
Ciubotariu Alexandra
Cobeliță Laviania
Cozmâncă Smaranda
David Georgiana Maria
Dobrea Alexandru Adrian
Dumitrache Ana-Ștefania
Ghileschi Bogdan Alexandru

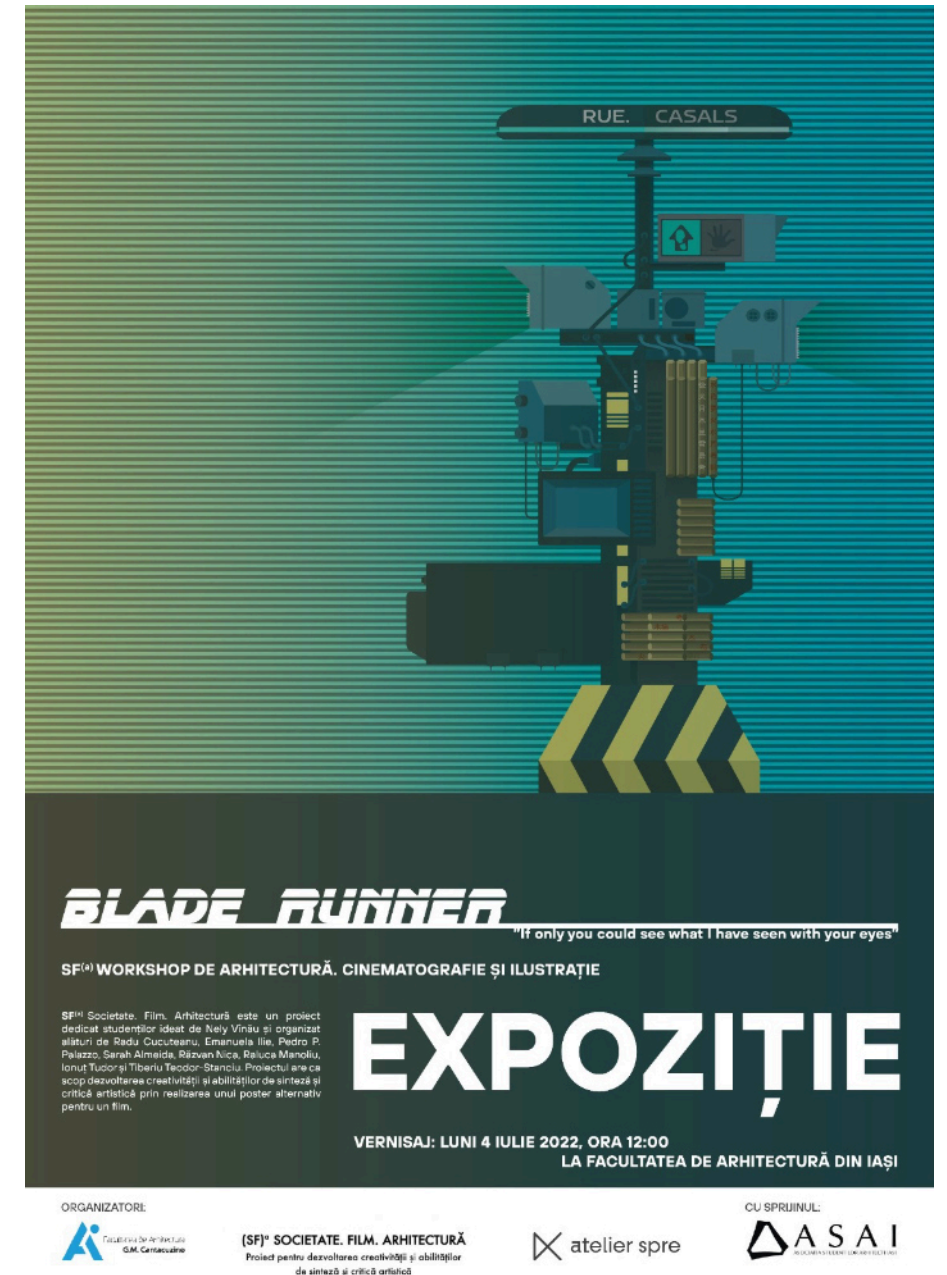
Grigoraș Ana Maria
Hătnean Costin Laurențiu
Ionescu Cosmina Ioana
Lăcătușu Alina Mădălina
Luca Florentina Iuliana
Luchian Valentin
Lupan Dana
Nițică Ana -Maria
Onofrei Daria Paraschiva
Paraschiv Ioana
Pătrașcu Ilinca
Platon Emanuel
Popescu Bianca Ioana

Pricop Maria Anastasia
Raluca Urdea
Romilă Alina Ioana
Scutăreanu Andreea
Scutariu Ioana Alexandra
Silion Cosmin Constantin
Șoitu Karina Alexandra
Tarșoagă Rareș Nicolae
Țiganea Olivia Ioana
Trofin Stefan Andrei
Turtoi Laura Maria
Ursache Andreea
Vasilache Gabriela

SF(a) Season 1 ALTERNATIVE POSTERS

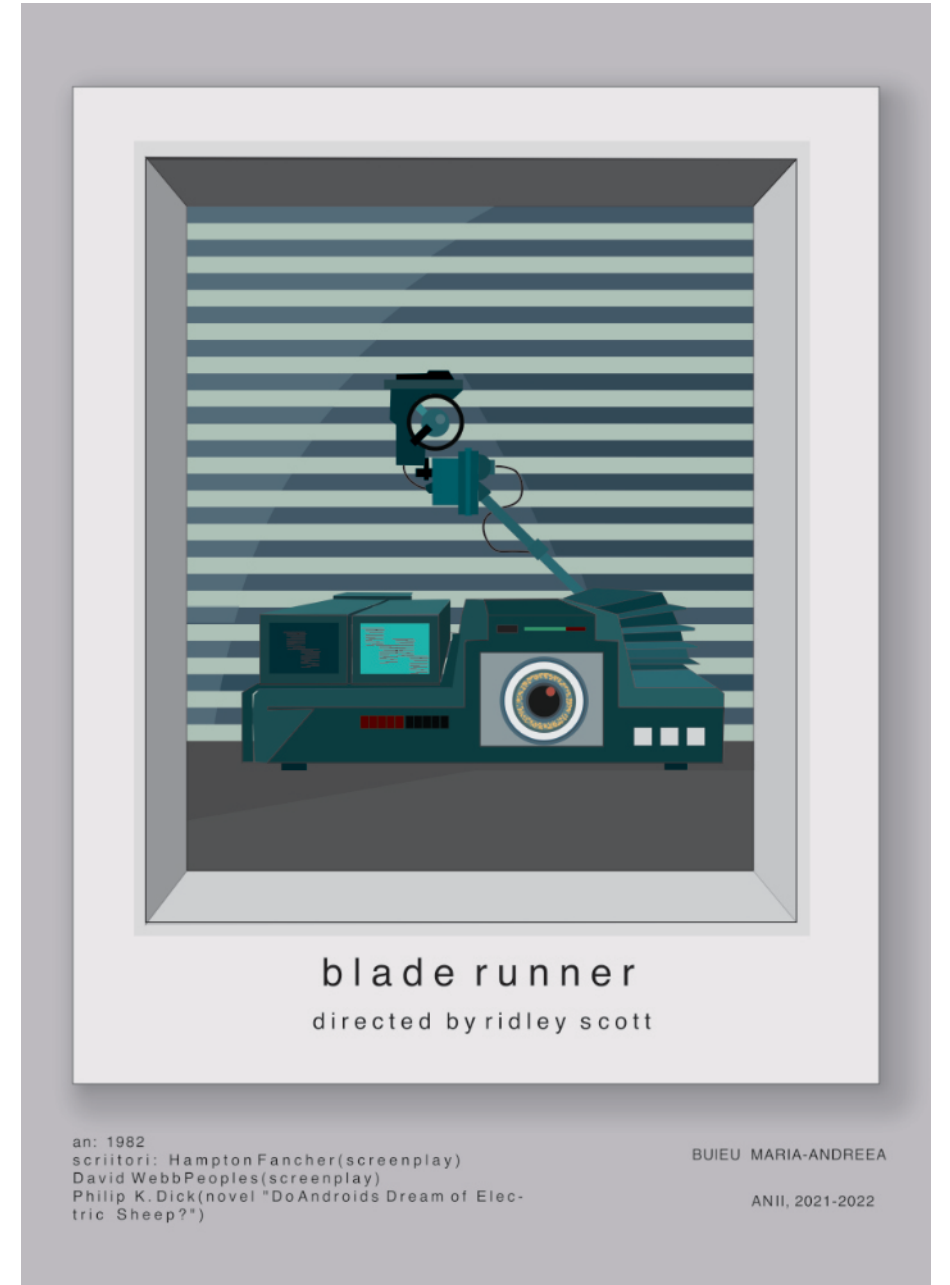
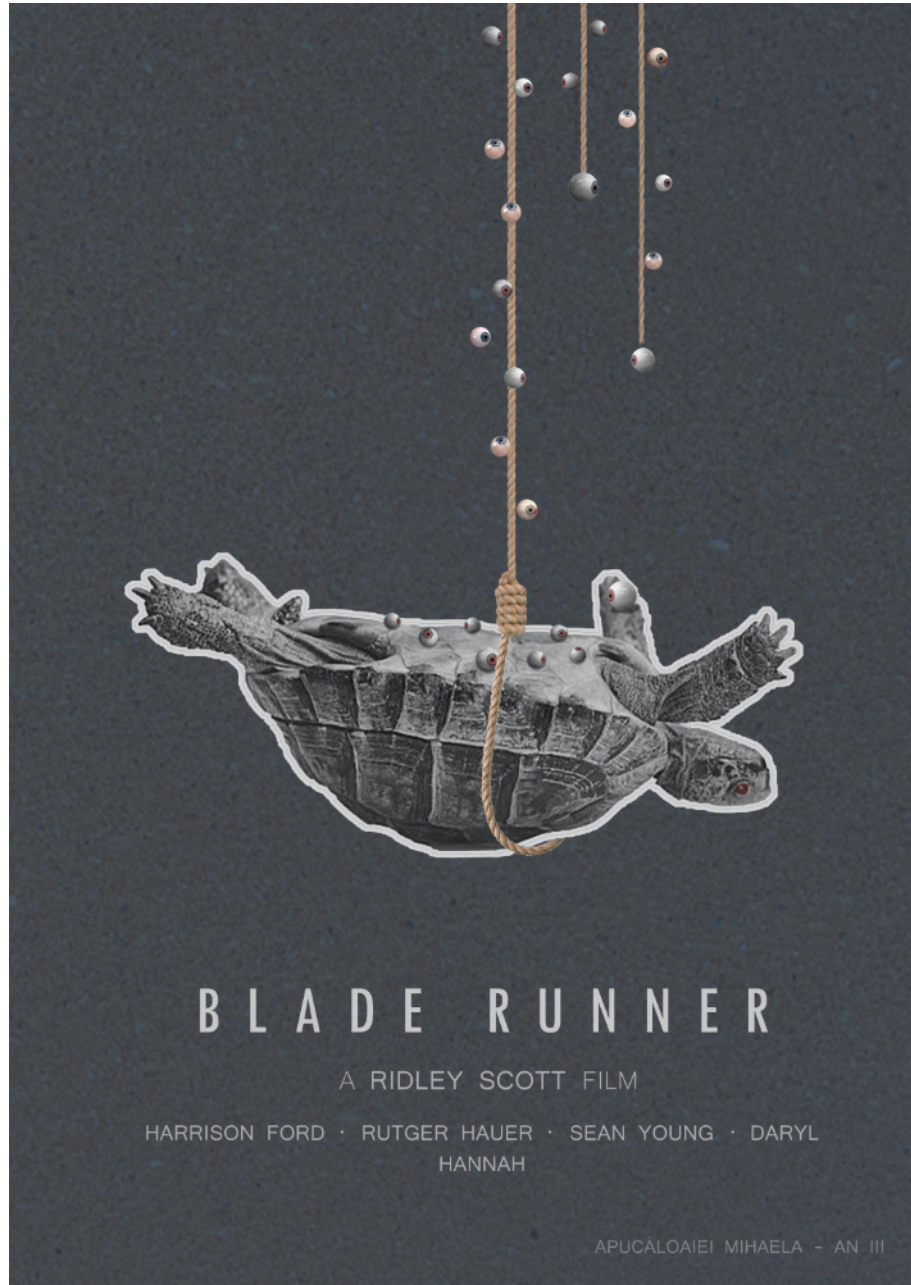
For the first edition poster, the visual depiction portrayed the fluctuation between the hues of red and green, symbolizing the contrast between artificial and natural realms. The color scheme of the traffic lights in Ridley Scott's film "Blade Runner" served as the inspiration for this dichotomy.

SF(a) season 1 official poster.
2022











IONESCU COSMINA-IOANA



SF(a) Season 3 PRODUCERS & Acknowledgements



1 Producers:

Romanian Order of Architects, Iași Branch
ALT+A Association

2 Production TEAM:

Nely VÎNĂU, Tiberiu TEODOR_STANCIU, Răzvan NICA

3 Partners:

“G.M. Cantacuzino” Faculty of Architecture,
“Gheorghe Asachi” Technical University of Iași

Faculty of Visual Arts and Design, “George Enescu”
University of Arts, Iași

ASAI - Asociația Studenților Arhitecți din Iași

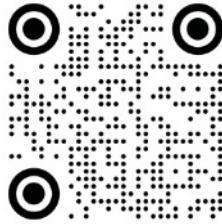
Atelier SPRE

FabLab Iași

“Vasile Pogor” Museum, The National Museum of
Romanian Literature Iași



SF(a) website



ALT+A on
Instagram



74



We would like to express our profound gratitude to Alin Enver **HOBLEA**, Tania **HAPURNE**, Matei **BEJENARU**, Emanuela **ILIE**, **OAR** Iași, **FABLAB**, “G.M. Cantacuzino” **Faculty of Architecture**, “**Vasile Pogor**” Museum, and **ASAI** for their contributions to the completion of season 3 of *SF(a) Society. Film. Architecture.*

This project is supported by the Romanian Order of Architects, from the Architectural Stamp Duty.



ORDINUL
ARHITECTILOR
DIN ROMANIA



Timbrul de
arhitectură